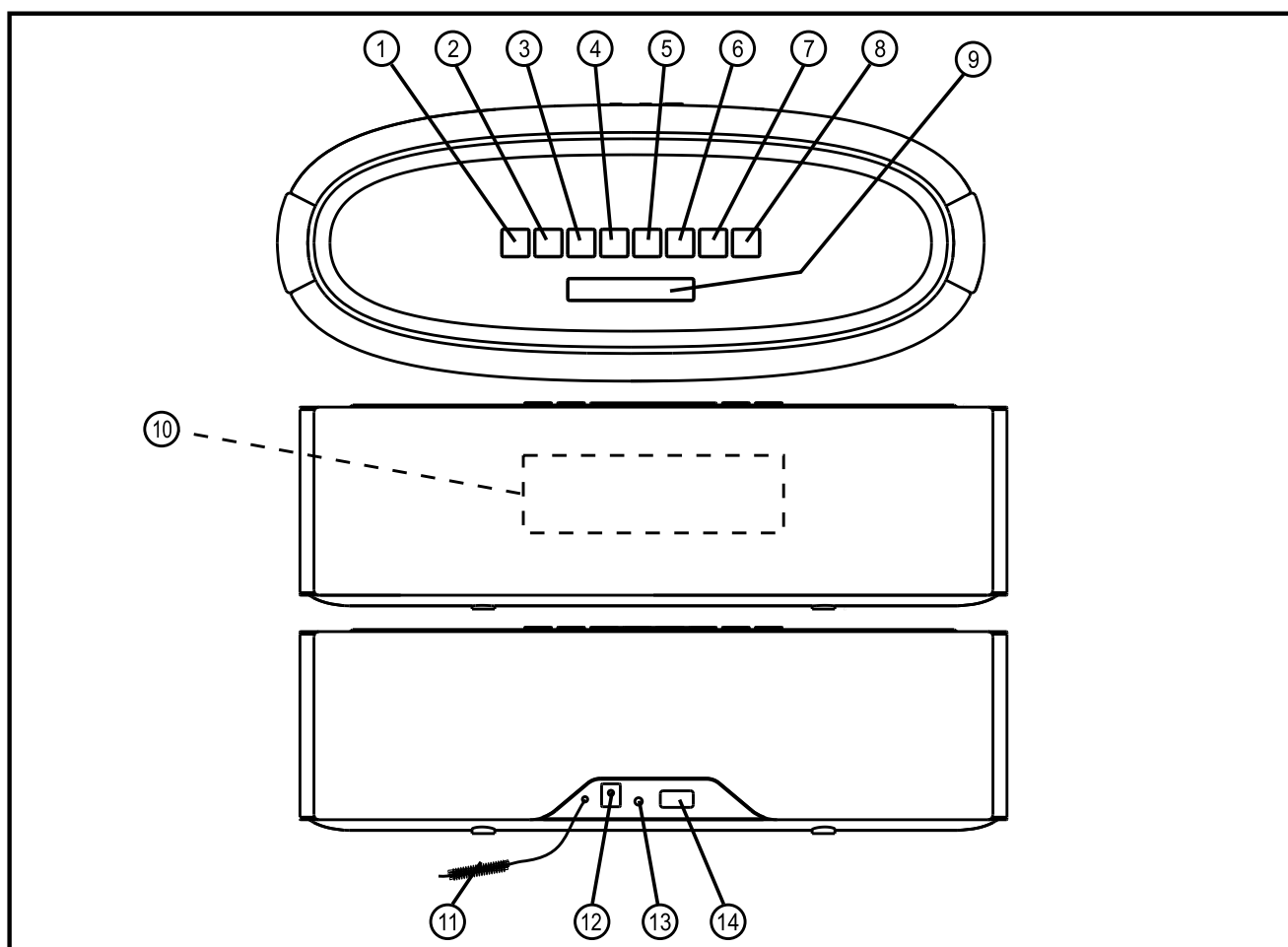





**HSG 3IIBT**  
**MANUAL**

• GB •



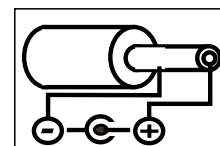
## LOCATION OF CONTROLS

- |                                      |  |
|--------------------------------------|--|
| 1. ON/ STANDBY KEY                   | 8. VOLUME UP/ CLOCK SET KEY  |
| 2. FUNCTION KEY                      | 9. DIMMER/ SNOOZE/ SLEEP KEY   |
| 3. MEMORY/ RECALL KEY                | 10. LED INDICATOR  |
| 4. BACK/ M-/ TUNE DOWN KEY           | 11. FM ANTENNA WIRE  |
| 5. PLAY/ PAUSE/ PAIRING/ FM MODE KEY | 12. DC JACK (DC 12V  +) |
| 6. NEXT/ M+/ TUNE UP KEY             | 13. AUX IN SOCKET  |
| 7. VOLUME DOWN/ ALARM KEY            | 14. USB CHARGING SOCKET  |

## POWER SUPPLY

### AC OPERATION (EXTERNAL AC-DC POWER ADAPTOR)

- THIS SET IS EQUIPPED WITH A "DC-JACK" CAPABLE OF ACCEPTING AC-ADAPTORS WITH A RATING OF DC = 12V, 1.5A, AND WITH A PLUG WITH THE FOLLOWING POLARITIES AS SHOWN (CENTER POSITIVE) :
- PLEASE USE ONLY THE SUPPLIED AC-ADAPTOR TO OPERATE THE UNIT. USE OF OTHER ADAPTORS MAY DAMAGE THE UNIT OR CAUSE IT TO MALFUNCTION.
- PLUG THE TAIL END OF THE AC-ADAPTOR INTO THE DC-JACK (SOCKET) ON THE REAR OF THE MAIN UNIT.
- INSERT THE PLUG AT THE END OF THE POWER CORD INTO THE WALL AC SOCKET.
- PRESS THE "ON/ STANDBY" KEY TO SWITCH ON THE UNIT.
- THIS UNIT IS DESIGNED TO OPERATE WITHOUT EVER BEING TOTALLY POWERED "OFF". IT WILL EITHER BE "ON" OR IN "STANDBY MODE".
- ANYTIME DURING STANDBY MODE, YOU CAN SWITCH "ON" THE UNIT BY PRESSING THE "ON/ STANDBY" KEY.
- SAVE ENERGY BY SWITCHING THE SYSTEM TO "STANDBY" MODE.



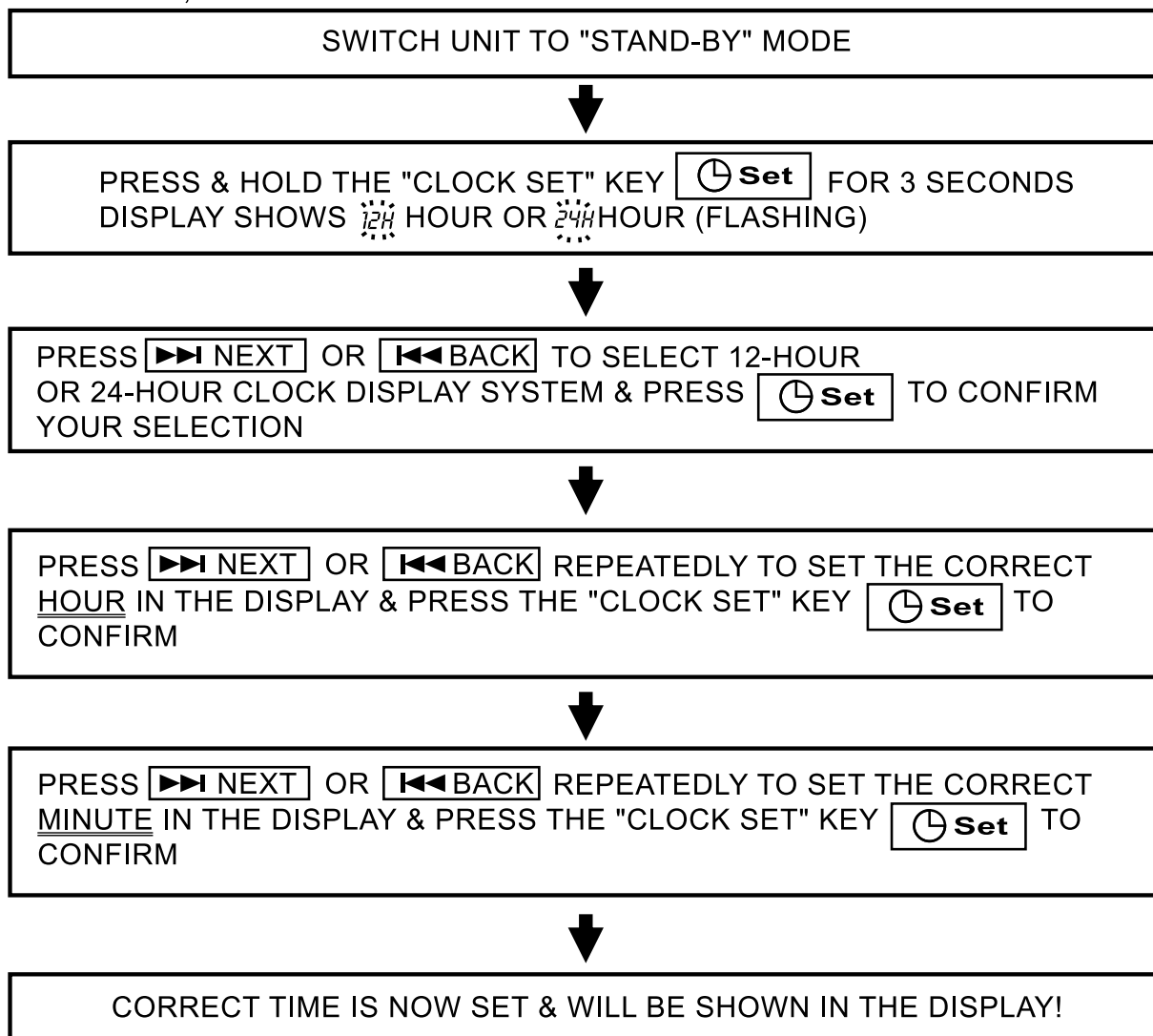
## DIGITAL CLOCK FUNCTION

### HOW TO SET CORRECT TIME:

THIS UNIT HAS A BUILT-IN DIGITAL CLOCK, WHICH IS DISPLAYED AT ALL TIMES DURING THE UNIT BEING POWERED.

NOTE: THE DIMMER FUNCTION IS ENABLED TO HAVE DISPLAY BRIGHTNESS LEVEL AT 0 (DISPLAY LIGHTS OFF/ FULL DIMMED).

TO SET THE TIME, FOLLOW THE BELOW STEPS:



\*NOTE:

THAT WHEN THE DIGITAL CLOCK IS NOT SET, THE DIGITAL CLOCK DISPLAY SHALL CONTINUOUSLY FLASH TO INDICATE THAT THE CORRECT TIME HAS NOT YET BEEN SET.

## INTELLIGENT POWER SAVING SYSTEM

- THIS SET HAS A BUILT-IN POWER SAVING SYSTEM WHICH WILL AUTOMATICALLY PUT THE SET INTO A "STANDBY MODE" TO REDUCE POWER CONSUMPTION WHEN IT DETECTS THAT THE SET IS NOT IN USE.
- THIS AUTOMATIC SWITCHING TO "STANDBY MODE" WILL HAPPEN APPROXIMATELY 10-15 MINUTES AFTER THE FOLLOWING CIRCUMSTANCES:
  - (A) "AUX" MODE: NO INPUT SIGNAL IS DETECTED AT THE AUX INPUT JACK.
  - (B) "BT" MODE: NO SIGNAL IS DETECTED.
- TO RE-ACTIVATE THE UNIT AFTER IT HAS AUTOMATICALLY SWITCHED TO "STANDBY MODE", SIMPLY TURN ON THE UNIT BY PRESSING THE ON/ STANDBY KEY.

## ALARM FUNCTION

- THIS SET IS EQUIPPED WITH ALARM FUNCTION, MAKE SURE TO SET THE CLOCK.

### ALARM SETTING

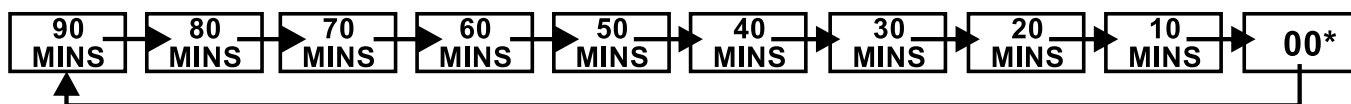
1. AT STANDBY MODE, PRESS AND HOLD THE **[ALARM]** KEY UNTIL THE DISPLAY HOUR FLASHING AND THE UNIT DISPLAYING "AL."
2. PRESS THE **[▶▶NEXT]** OR **[◀◀BACK]** KEY TO REACH THE HOUR OF THE DESIRED WAKE UP TIME.
3. PRESS **[ALARM]** KEY TO CONFIRM THE UNIT SHOULD NOW HAVE THE DISPLAY MINUTES FLASHING.
4. PRESS **[▶▶NEXT]** OR **[◀◀BACK]** KEY TO REACH THE MINUTES OF THE DESIRED WAKE UP TIME.
5. PRESS **[ALARM]** KEY TO CONFIRM COMPLETE THE **[ALARM]** SETTING.
6. THE SET WILL NOW AUTOMATICALLY SWITCH "ON" WITH AT THE WAKE-UP TIME AS YOU HAVE CHOSEN, AS LONG AS THE ALARM FUNCTION IS "ACTIVE".
7. TO TURN OFF THE UNIT AFTER IT HAS AUTOMATICALLY SWITCHED ON, SIMPLY PRESS THE "ON/ STANDBY" KEY ONCE. THIS WILL SWITCH OFF THE SET BUT WILL NOT CLEAR THE ALARM SETTINGS, AND THE SET WILL SWITCH ON AGAIN AUTOMATICALLY ON THE NEXT DAY AT EXACTLY THE SAME PRESET TIME.
8. TO DEACTIVATE THE ALARM, PRESS & RELEASE THE **[ALARM]** KEY. THE ALARM SYMBOL "AL" DISAPPEARS FROM THE DISPLAY.
9. TO ACTIVATE THE ALARM AGAIN, REPEAT THE PROCEDURE OF "ALARM TIME SETTING" AS DESCRIBED.

## SNOOZE FUNCTION

- WHENEVER THE ALARM COMES ON, IT CAN BE TEMPORARILY SUSPENDED FOR A SHORT PERIOD OF APPROXIMATELY 9 MINUTES, BY PRESSING THE "SNOOZE" KEY ONCE.
- THE ALARM WILL THEN AUTOMATICALLY COME ON AGAIN AFTER APPROXIMATELY 9 MINUTES "SNOOZE" PERIOD HAS ENDED.
- THE PROCEDURE CAN BE REPEATED FOR APPROXIMATELY AN HOUR.

## AUTOMATIC POWER OFF SLEEP FUNCTION

- THIS SET HAS A SPECIAL SLEEP TIMER FUNCTION WHICH CAN AUTOMATICALLY SWITCH OFF THE UNIT. THIS IS USEFUL FOR SLEEPING TO MUSIC AT NIGHT.
- AT ANY TIME WHILE THE UNIT IS OPERATING, PRESS AND HOLD THE "DIMMER/ SNOOZE/ SLEEP" KEY TO ACCESS THE "SLEEP TIME". THEN PRESS THE "DIMMER/ SNOOZE/ SLEEP" KEY REPEATEDLY TO CHOOSE THE AUTOMATIC OFF TIME. THE "SL." SYMBOL WILL BE SHOW ON THE DISPLAY.



(\*00 MEANS SLEEP TIMER IS DEACTIVATED)

## BLUETOOTH® WIRELESS PLAYBACK

THE UNIT CAN WIRELESSLY STREAM AUDIO FROM ANY BLUETOOTH® DEVICE WITHIN 30 FEET.

SIMPLY PAIR THE DEVICE AND ENJOY WIRELESS PLAYBACK AND CONTROL FROM YOUR BLUETOOTH® DEVICE.

### PREPARE THE UNIT:

- PRESS THE ON/STANDBY KEY TO TURN THE UNIT ON.
- THE LED INDICATOR WILL FLASH TO INDICATE THE UNIT IS ON AND WAITING FOR PAIRING.
- THE LED INDICATOR WILL KEEP REMAIN LIT WHEN PAIRED.

**\*NOTE ONLY ONE DEVICE CAN BE PAIRED AT ANY GIVEN TIME.**

### PREPARE YOUR PHONE OR OTHER BLUETOOTH® DEVICE:

- TURN ON THE BLUETOOTH® FUNCTION, THIS IS USUALLY FOUND UNDER GENERAL SETTINGS OR OPTIONS.

**\*PLEASE REFER TO YOUR DEVICE'S MANUAL FOR FURTHER BLUETOOTH® DETAILS.**

### MAKE THE CONNECTION:

- GO TO YOUR DEVICE'S BLUETOOTH® SETTINGS
- ADD OR SEARCH FOR DEVICES
- IF ASKED FOR A PASS CODE, ENTER "0000"

**\*THIS IS A ONE-TIME EVENT PER DEVICE. TO PAIR YOUR UNIT TO ANOTHER DEVICE, REPEAT THE ABOVE PREPARATION AND CONNECTION STEPS.**

### DISABLING THE CONNECTION:





TO UNPAIR A BLUETOOTH® DEVICE THAT IS ALREADY PAIRED, PRESS AND HOLD THE PAIR KEY FOR A FEW SECONDS.

### VOLUME CONTROL:

INCREASE AND DECREASE VOLUME USING THE VOLUME UP AND VOLUME DOWN KEYS ON THE UNIT OR USING THE VOLUME CONTROLS ON YOUR BLUETOOTH® ENABLED DEVICE.

**\*NOTE THAT IF THERE IS NO PLAYBACK, ENSURE THAT NEITHER THE UNIT NOR YOUR BLUETOOTH® DEVICE ARE SET TO ZERO VOLUME AND THE CORRECT DEVICE FOR PLAYBACK IS PAIRED.**

## SPEAKER OPERATION

- PRESS THE PLAY/PAUSE KEY  TO START PLAYBACK.
- AT ANYTIME DURING PLAYBACK, PRESS THE PLAY/PAUSE KEY  TO PAUSE OPERATION. PRESS AGAIN TO RESUME OPERATION AT THE SAME TRACK & POSITION.
- AT ANYTIME DURING PLAYBACK, "PRESS AND RELEASE" THE NEXT OR BACK KEY :  OR  TO SKIP BACKWARDS OR FORWARDS BY ONE TRACK, AS DESIRED.

## USING THE AUDIO LINE IN CONNECTION (AUX-INPUT)

- YOU CAN CONNECT THE AUDIO OUTPUT OF AN EXTERNAL DEVICE SUCH AS A MP3 PLAYER TO THIS UNIT, TO LISTEN TO THE SOUND OF THAT DEVICE THROUGH THE HIGH QUALITY AMPLIFIER OF THIS MUSIC SYSTEM.
- TO CONNECT THE EXTERNAL DEVICE PLEASE USE A STANDARD STEREO HEADPHONE (3.5MM TO 3.5MM PLUGS) CABLE TO CONNECT THE "HEADPHONE-OUT OR AUDIO LINE-OUT" OF THE DEVICE TO THE AUX-INPUT SOCKET OF THIS UNIT.
- SELECT THE FUNCTION TO "AUX IN" BY PRESSING THE SOURCE KEY ONCE.
- SWITCH ON THE EXTERNAL DEVICE (eg. MP3-PLAYER).
- START PLAYBACK OF THE EXTERNAL DEVICE AND ADJUST THE VOLUME CONTROL OF THE UNIT TO THE DESIRED LEVEL.
- REMEMBER TO SWITCH OFF THE UNIT AND THE EXTERNAL DEVICE WHEN YOU ARE FINISHED USING THE EXTERNAL DEVICE.
- SWITCH BACK TO BLUETOOTH® MODE ANYTIME BY PRESSING THE SOURCE KEY AGAIN.

## OPERATION OF RADIO

- PRESS THE **ON/STANDBY** KEY ONCE TO SWITCH ON THE UNIT.
- PRESS THE **FUNCTION** KEY REPEATEDLY UNTIL THE DISPLAY SHOWS "FM".
- TO IMPROVE FM-RADIO RECEPTION, FULLY EXTEND THE FM-ANTENNA WIRE AND ADJUST IT'S POSITION.
- ANYTIME IN FM STATIONS, USE THE **PLAY/ PAUSE/ PARING** KEY TO SELECT THE DESIRED MODE (FM MONO/STEREO). IN SOME CASES, WHERE RECEPTION IS POOR, IT MAY BE ADVISABLE TO SELECT "MONO" MODE, TO IMPROVE CLARITY OF THE RADIO SIGNAL.

## MANUAL FREQUENCY ADJUSTMENT (SCAN MODE)

- PRESS (AND IMMEDIATELY RELEASE) THE **▶▶ NEXT/ TUNE +/ M+** OR **◀◀ BACK/ TUNE -/ M-** KEY TO "SCAN" (MANUALLY ADJUST) THE RADIO FREQUENCY "UP" OR "DOWN" BY 1-STEP AT A TIME.
- THE RADIO DIGITAL DISPLAY WILL INDICATE THE EXACT FREQUENCY AT EACH STEP'S POSITION.
- WHEN A DESIRED FREQUENCY OR STATION IS REACHED. IT CAN BE SAVED INTO ONE OF THE "MEMORY" POSITIONS. (SEE "RADIO MEMORY" SECTION).

## AUTOMATIC FREQUENCY ADJUSTMENT (SEEK MODE)

- PRESS AND HOLD (FOR 2 SECONDS) THE **▶▶ NEXT/ TUNE +/ M+** OR **◀◀ BACK/ TUNE -/ M-** KEYS TO "SEEK" (AUTOMATICALLY ADJUST) THE RADIO FREQUENCY "UP" OR "DOWN" TO THE NEXT AVAILABLE RADIO STATION.
- THE RADIO DIGITAL DISPLAY WILL INDICATE THE EXACT FREQUENCY OF THE NEXT STATION THAT IS FOUND.
- WHEN A DESIRED STATION IS REACHED. IT CAN BE SAVED INTO ONE OF THE "MEMORY" POSITIONS. (SEE "RADIO MEMORY" SECTION).

## RADIO MEMORY (STATION PRESET MEMORY STORAGE)

- AT ANY TIME, THE CURRENTLY DISPLAYED STATION OR FREQUENCY CAN BE STORED INTO ONE OF THE MEMORY POSITION.
- PRESS AND HOLD **MEMORY/ RECALL** KEY
- PRESS **▶▶ NEXT/ TUNE +/ M+** OR **◀◀ BACK/ TUNE -/ M-** KEY TO SELECT DESIRED MEMORY POSITION. (THERE ARE 20 MEMORY POSITIONS).
- PRESS **MEMORY/ RECALL** KEY ONCE TO SAVE THE SELECTED STATION INTO THE SELECTED MEMORY POSITION.

## RADIO MEMORY (RECALL PRESET MEMORY STATION)

- RECALL ANY SAVED MEMORY, SIMPLY SHORT PRESS **MEMORY/ RECALL** KEY.
- PRESS **▶▶ NEXT/ TUNE +/ M+** OR **◀◀ BACK/ TUNE -/ M-** TO SELECT DESIRED MEMORY POSITION.
- TO CLEAR THE MEMORY OF ANY POSITION, SIMPLY SAVE A NEW STATION TO THE SAME MEMORY POSITIONS.

## ELECTRONIC VOLUME CONTROL

- THIS UNIT USES AN ELECTRONIC VOLUME CONTROL (PUSH BUTTON TYPE) .
- TO INCREASE OR DECREASE THE LOUDNESS OF UNIT, PRESS THE VOLUME UP (+) OR VOLUME DOWN (-) KEYS RESPECTIVELY.
- RELEASE THE KEY WHEN VOLUME LEVEL IS AT THE DESIRED LOUDNESS.
- SOMETIMES, ESPECIALLY DURING LISTENING TO THE RADIO, YOU MAY NOTICE A "CLICK-CLICK-CLICK" (REPEATING) SOUND WHEN YOU ARE INCREASING OR DECREASING THE VOLUME. THIS IS A NORMAL CONDITION & THE SOUND WILL DISAPPEAR WHEN YOU RELEASE THE VOLUME KEY (WHEN YOU REACH THE DESIRED VOLUME LEVEL).

## DIMMER FUNCTION

- THIS SET HAS A DIMMER FUNCTION TO INDEPENDENTLY ADJUST THE BRIGHTNESS LEVEL OF THE CONTROL BUTTONS, UNIT DISPLAY AND AMBIENT UNDER LIGHTING.
- PRESS THE DIMMER KEY REPEATEDLY TO CHOSE BETWEEN THE LIGHTING AREA TO CHANGE THEIR RESPECTIVE BRIGHTNESS LEVELS IN HIGH/ MEDIUM/ OFF DISPLAY.

NOTE: THE DISPLAY WILL ALWAYS RETURN TO NORMAL-DIMMER AFTER RESET OF THE UNIT.

## SPECIFICATIONS

- POWER SUPPLY : ..... DC 12V, 1.5A THROUGH BUILT-IN DC JACK  
EXTERNAL AC-DC POWER ADAPTOR 110V-240V ~ 50/60Hz
- SPEAKER : ..... MAIN SPEAKER 3" x 2 PCS  
TWEETER SPEAKER 23MM x 2 PCS

**WWW.CALIBER.NL**

**CALIBER HEAD OFFICE** • The Netherlands • Fax: +31 (0)416 69 90 01 • E-mail: [info@caliber.nl](mailto:info@caliber.nl)